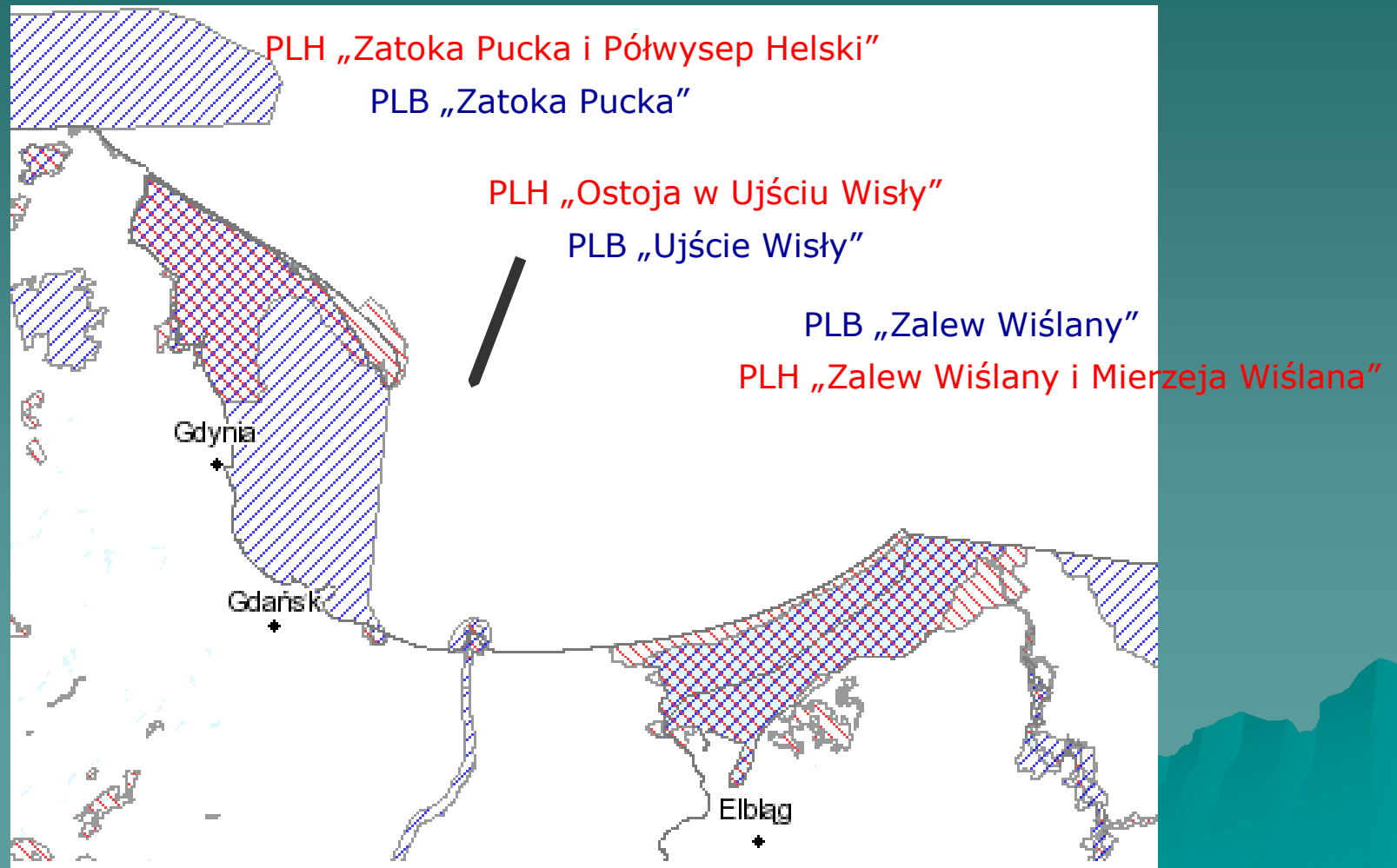


Natura 2000 in the range of Maritime Office in Gdynia competences



Monika Zakrzewska

„Draft plans for the protection of Natura 2000 sites in the Gulf of Gdansk and the Vistula Lagoon” Scope project sites



NATURA 2000 SITES COVERED BY THE PROJECT

- ◆ Zatoka Pucka i Półwysep Helski PLH220032 pow. 26844.3 ha
- ◆ Zatoka Pucka PLB220005 pow. 62430.4 ha
- ◆ Ostoja w Ujściu Wisły PLH220044 pow. 883.5 ha
- ◆ Ujście Wisły PLB220004 pow. 1748.1 ha
- ◆ Zalew Wiślany i Mierzeja Wiślana PLH280007 pow. 40862.6 ha
- ◆ Zalew Wiślany PLB280010 pow. 32224.1 ha

Reconciling port activities and bird conservation in the Natura 2000 sites overlapping with the Port of Gdańsk

- ◆ Research within the frame of the management plan of Natura 2000 sites in Gdańsk Bay has shown a reduction of nesting places for protected species of birds.
- ◆ The most secure place nowadays is located in the Port of Gdańsk area where the public access is very limited.
- ◆ Goal - Ensuring the successful breeding of 3 species of birds: Common Tern (*Sterna hirundo*), Little Tern (*Sternula albifrons*) and Ringed Plover (*Charadrius hiaticula*) within the Natura 2000 sites: Puck Bay and Vistula Mouth as well as the successful business development in the Port of Gdańsk.

Human pressure on natural habitats of
birds in Gdańsk Bay

+

Port area closed for public access

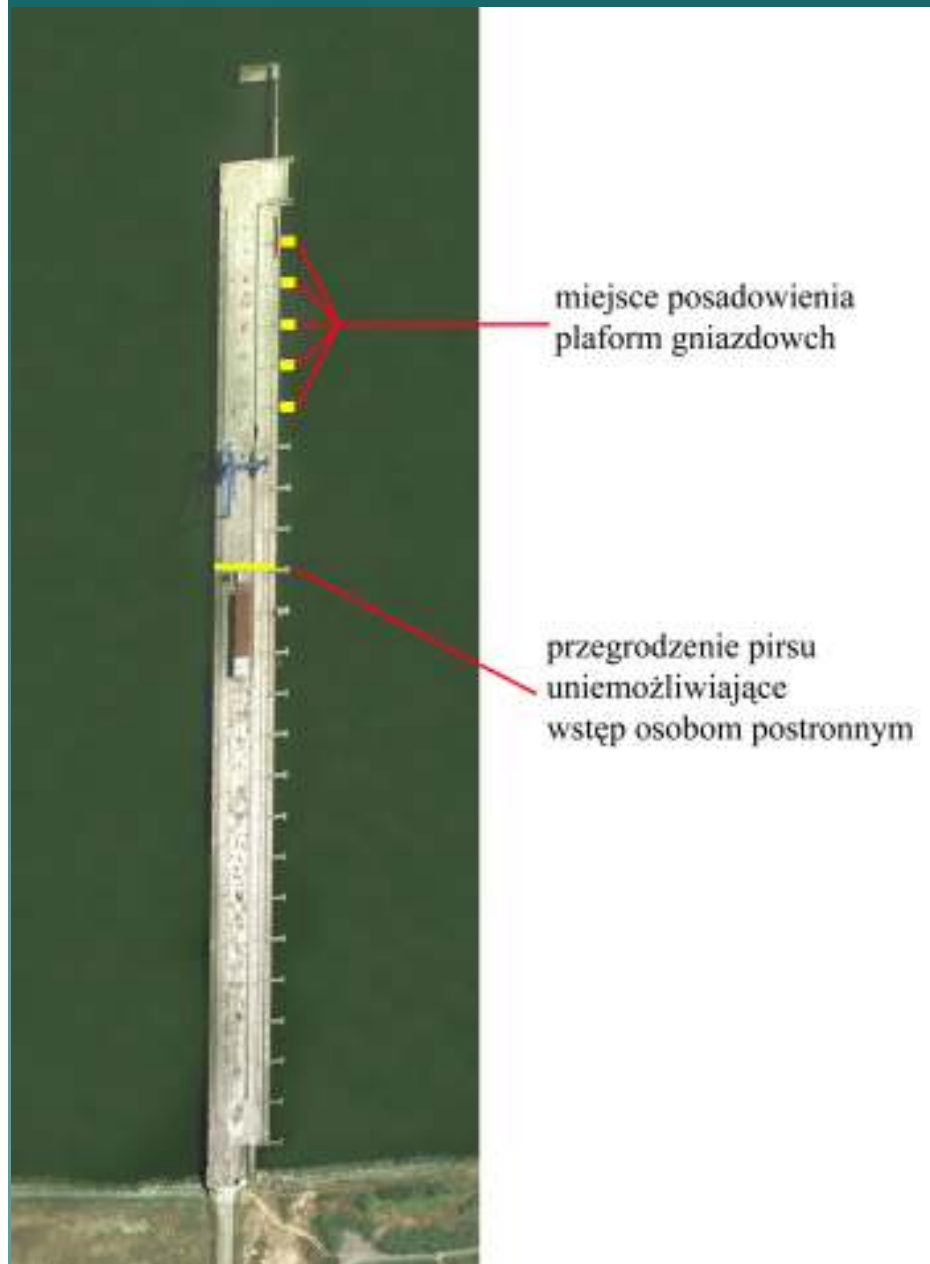
=

Presence of breeding birds in the Port

2000-2009 r. – colony of Common Tern on Rudowy Pier in Gdańsk:
30 – 120 pairs in different years
100% of that species population in Natura 2000 site Zatoka Pucka



Platforms for Common Tern on Rudowy Pier in Gdańsk - succesful compensation 2011-2013



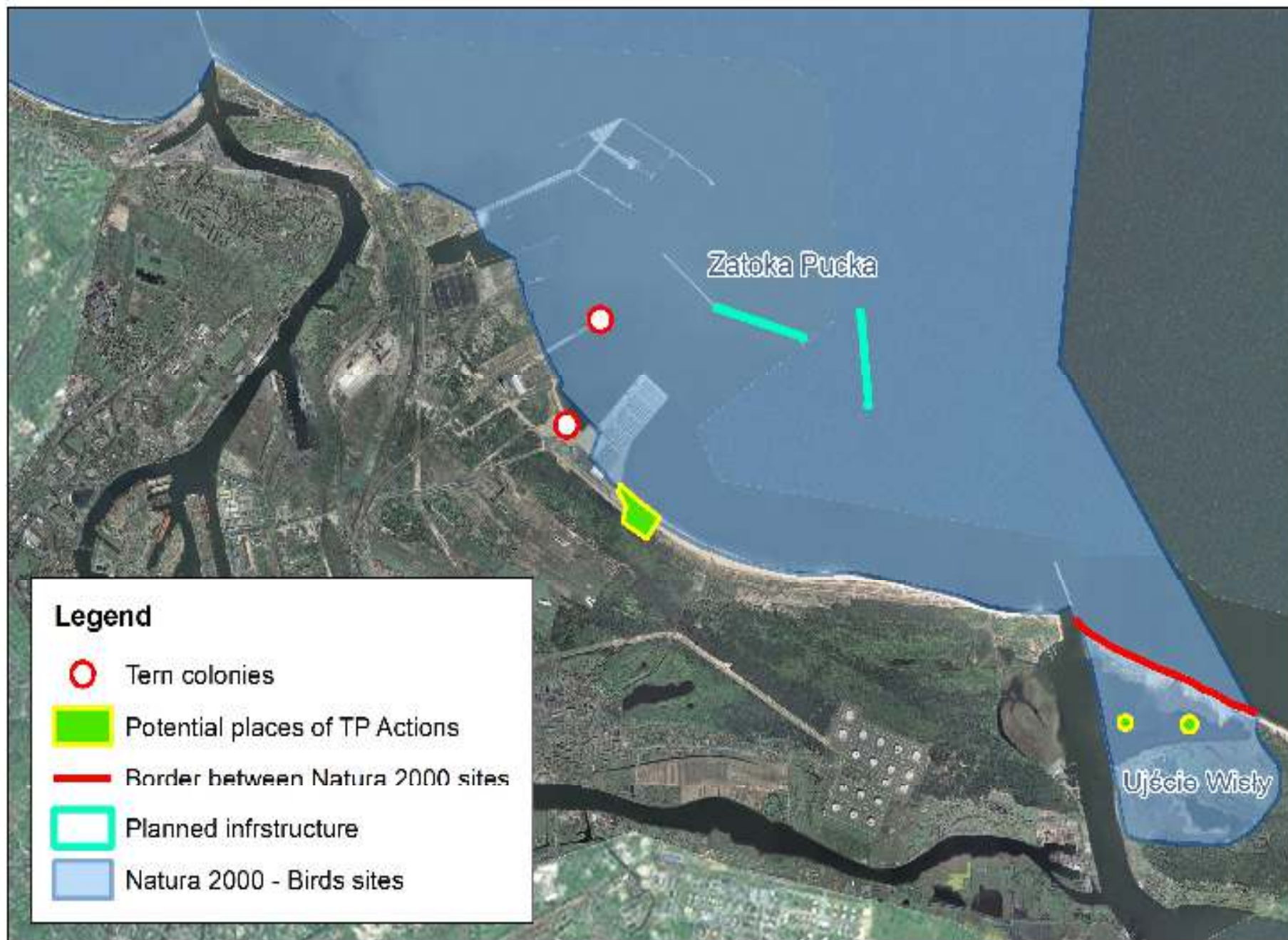
Status of birds within the project region - occurrence and protection

(Data source: BirdLife International 2012, Wilk, T. 2010)

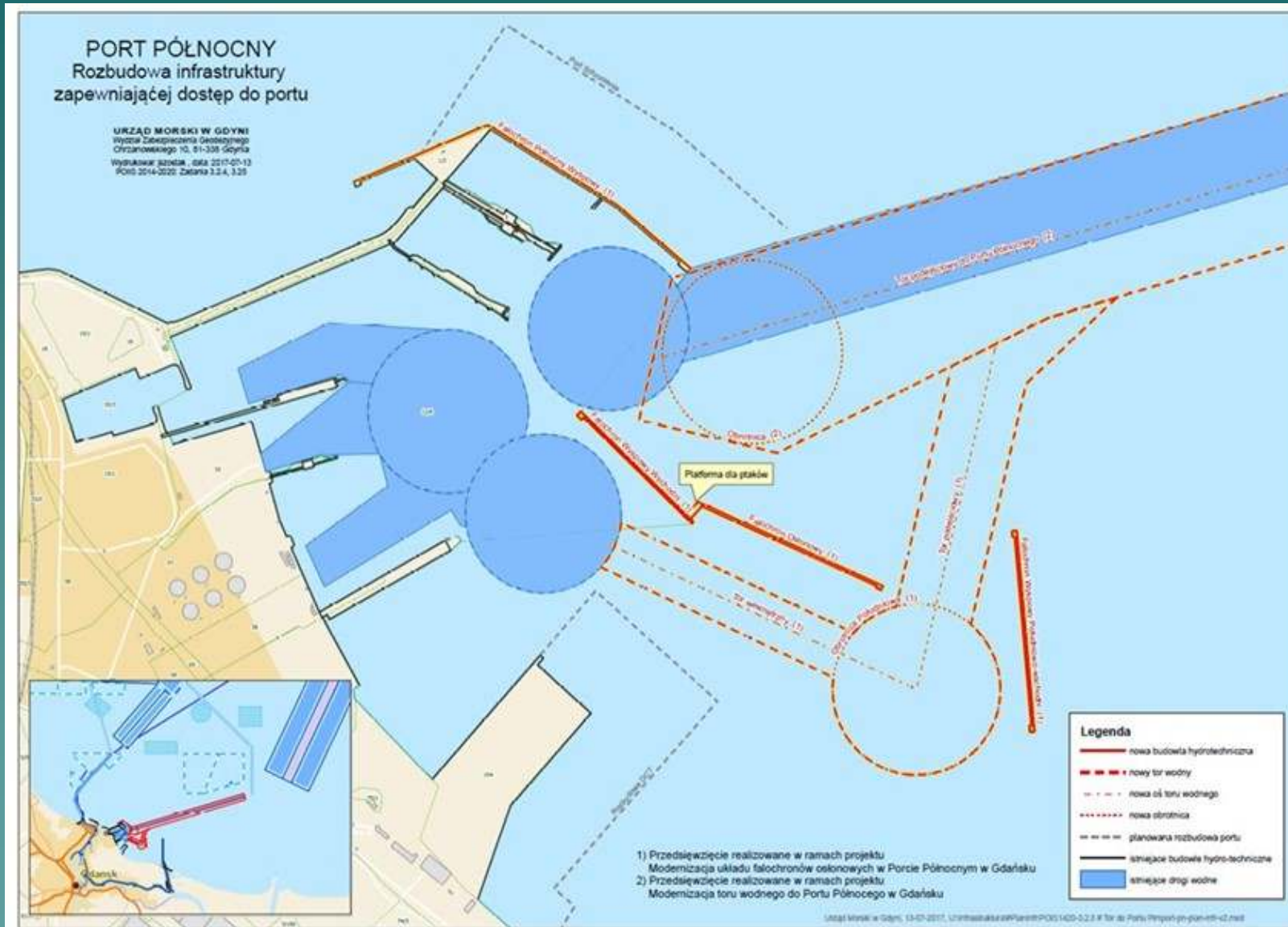
It.	English name	Latin name	Appendix 1 Birds Directive	Polish Red Book of Animals	% of Polish breeding pop.	Global status IUCN/ Trends
1.	Common Tern	<i>Sterna hirundo</i>	+	-	4%	LC/Decreasing
2.	Little Tern	<i>Sternula albifrons</i>	+	NT	3%	LC/Decreasing
3.	Ringed Plover	<i>Charadrius hiaticula</i>	-	VU	3%	LC/Decreasing



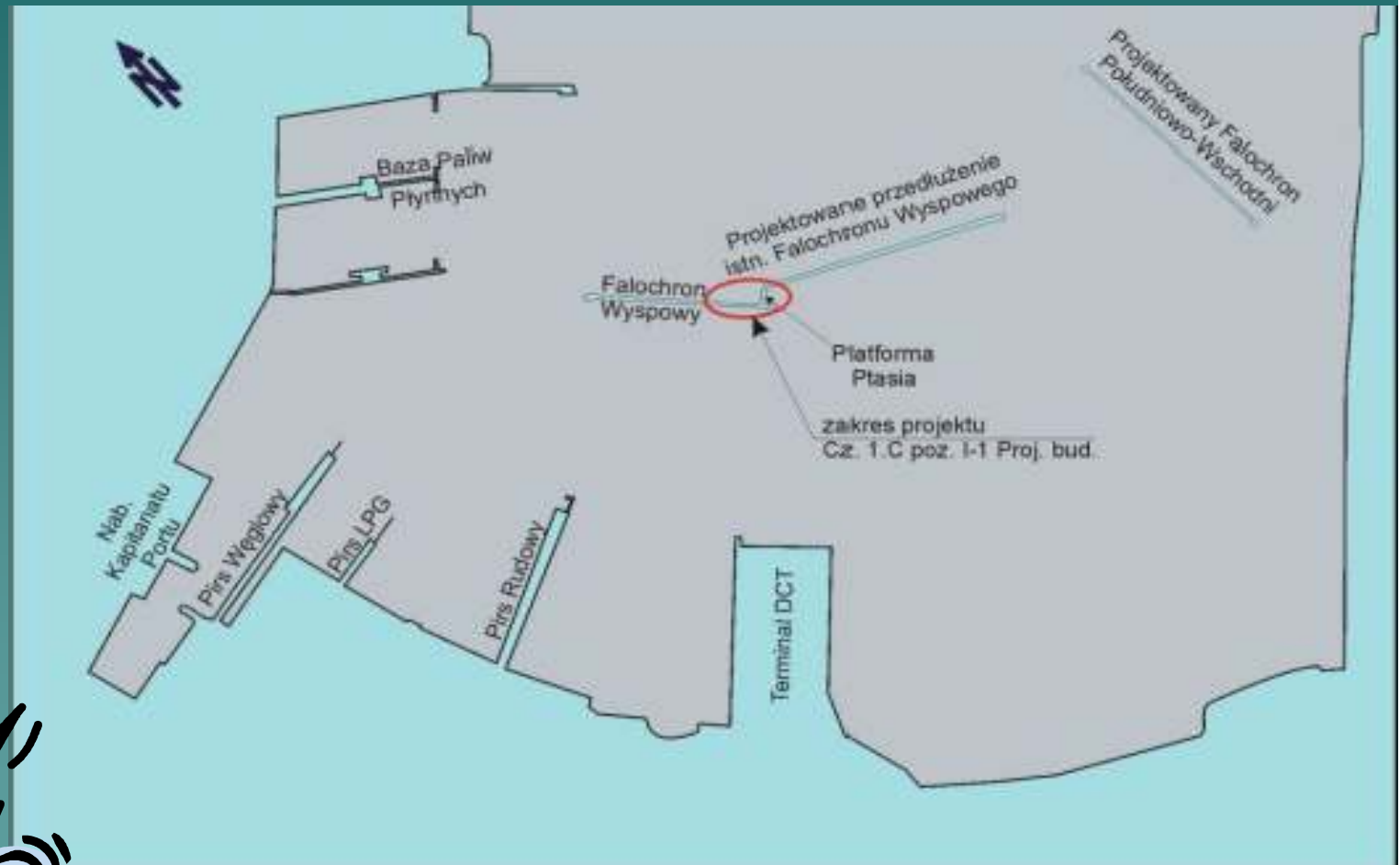
Foto: Szymon Bzoma
Common Tern in Port of Gdańsk (Nodern)



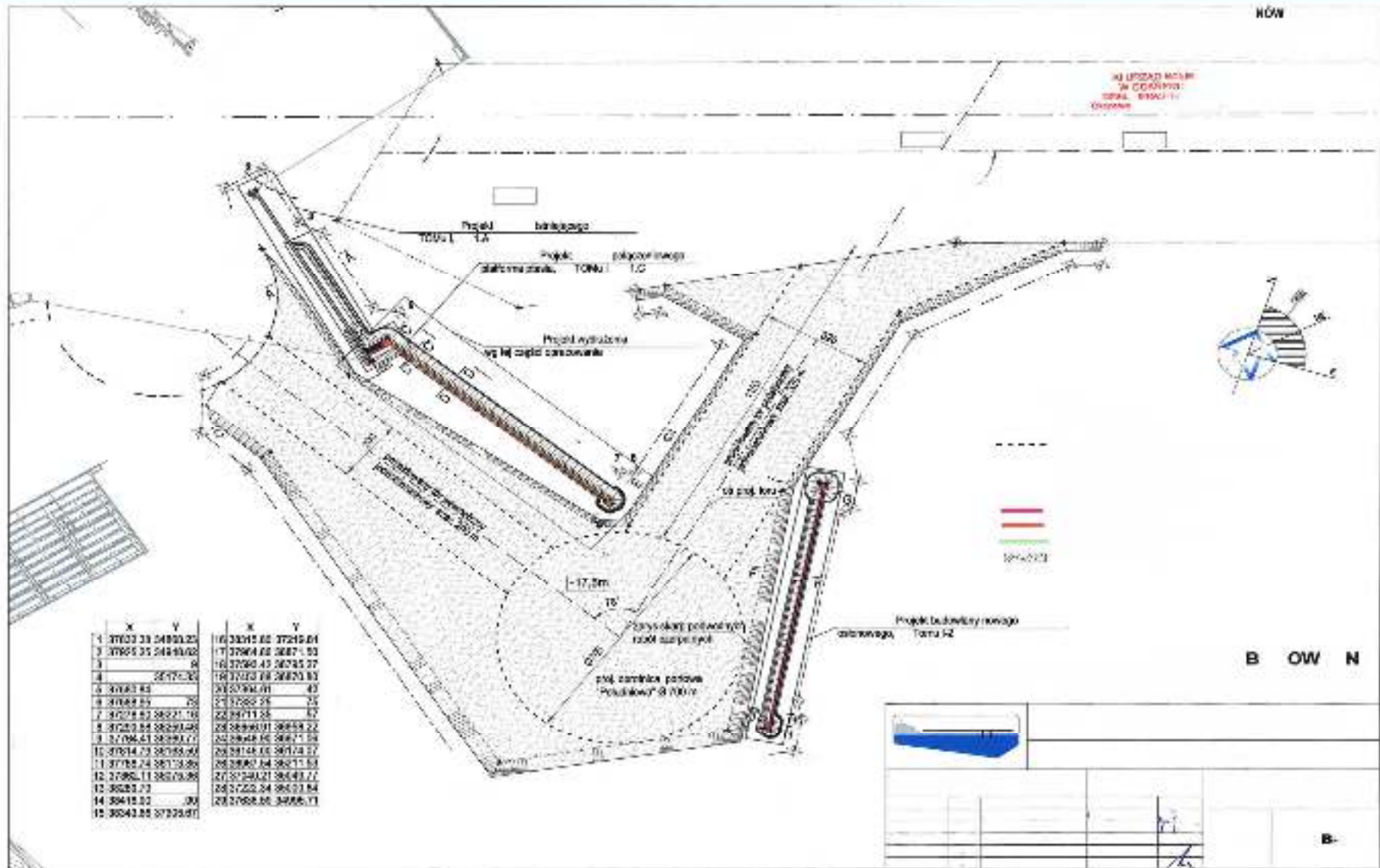
Gdańsk Port - new infrastructure



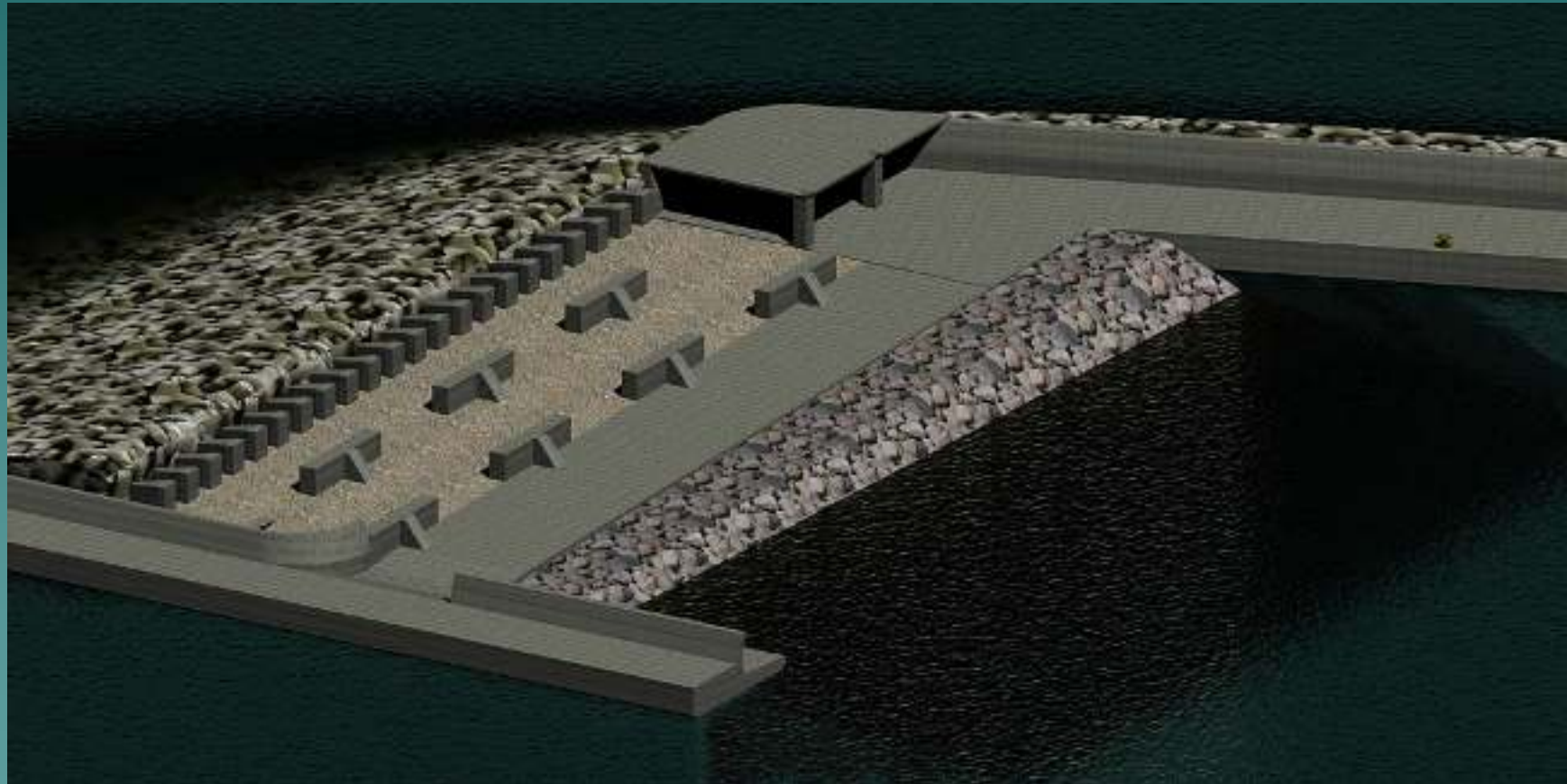
Bird's platform on breakwater



Orientational plan of breakwater in Port of Gdańsk



Bird's platform on breakwater



Thank you for attention



Maritime Office in Gdynia

monika.zakrzewska@umgdy.gov.pl

Tufted duck in Gdańsk Port