



Rijkswaterstaat
*Ministry of Infrastructure
and Water Management*



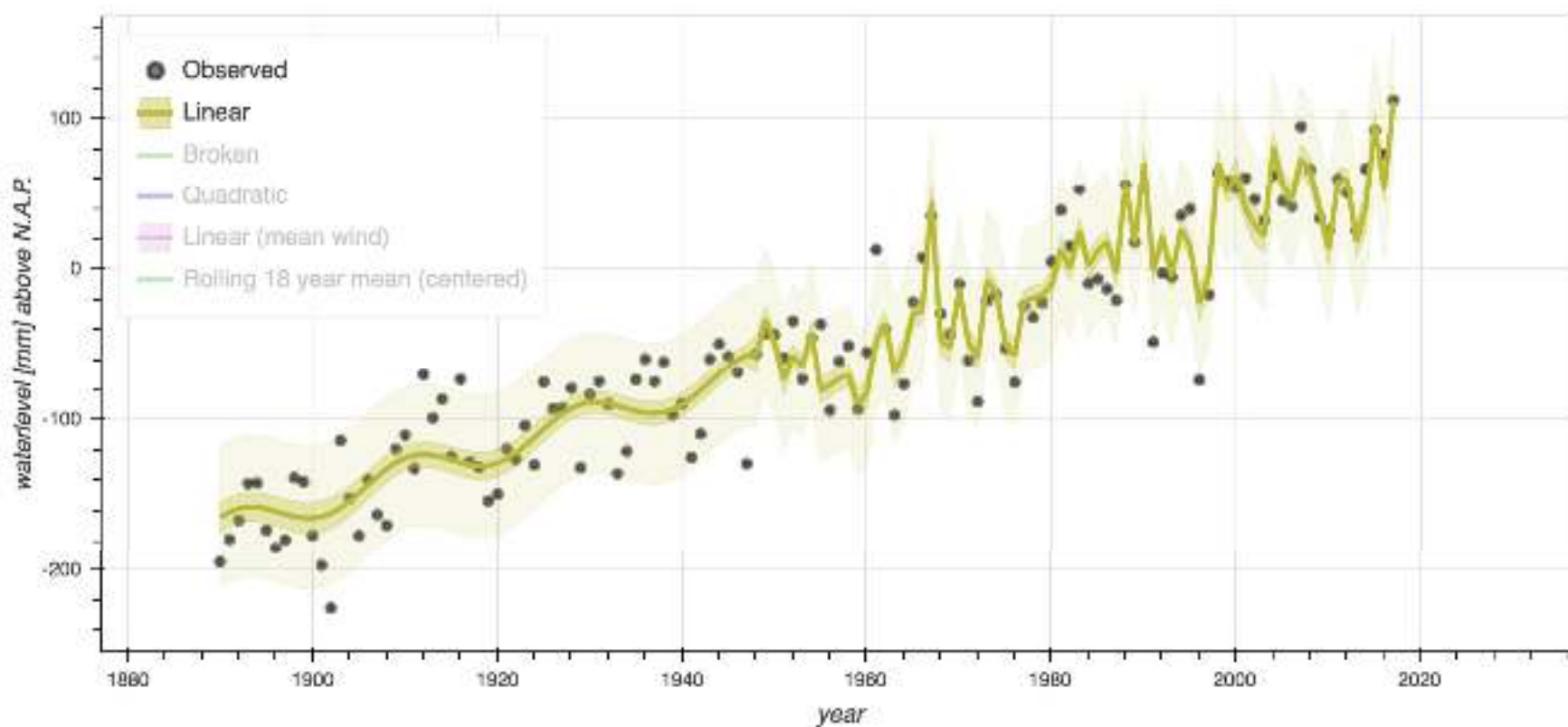
After Kring meeting

Climate adaptation
pathways

September 24, 2019

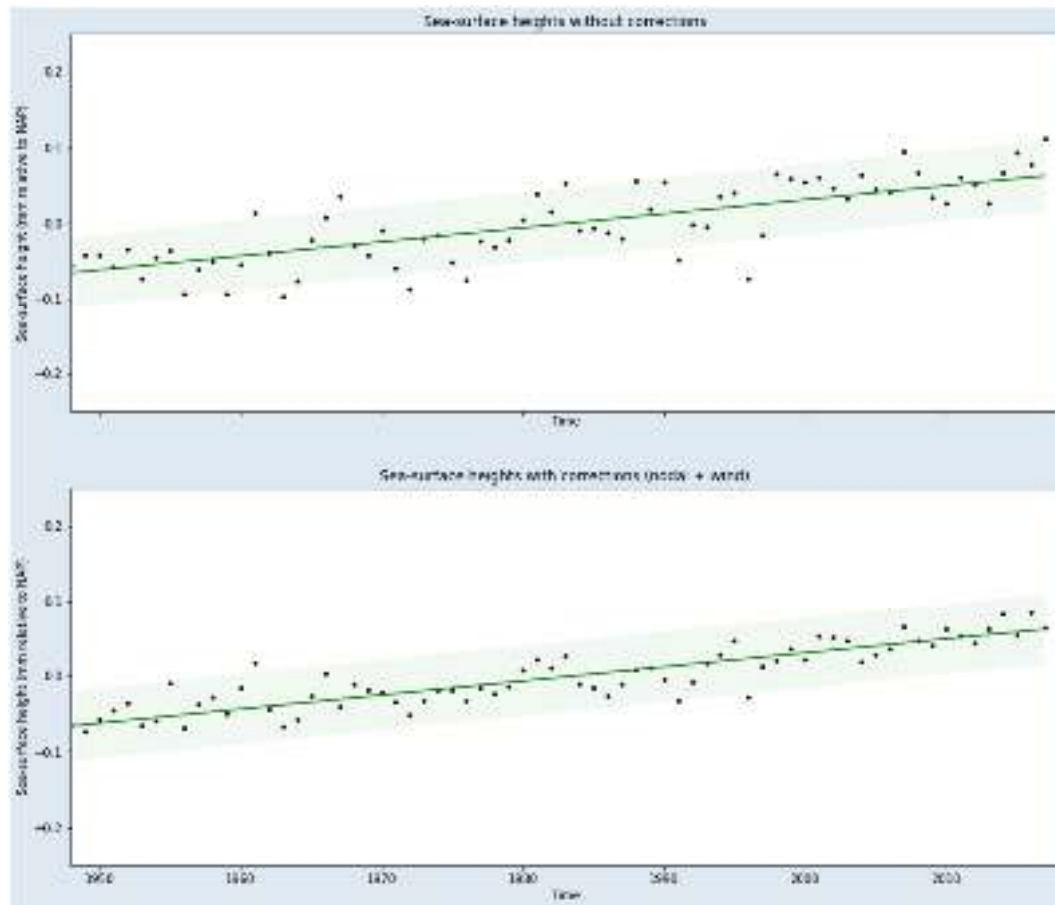


Sea Level Rise: average sea levels in NL Now versus the (near?) future.





Sea Level Rise: average sea levels in NL Now versus the (near?) future.

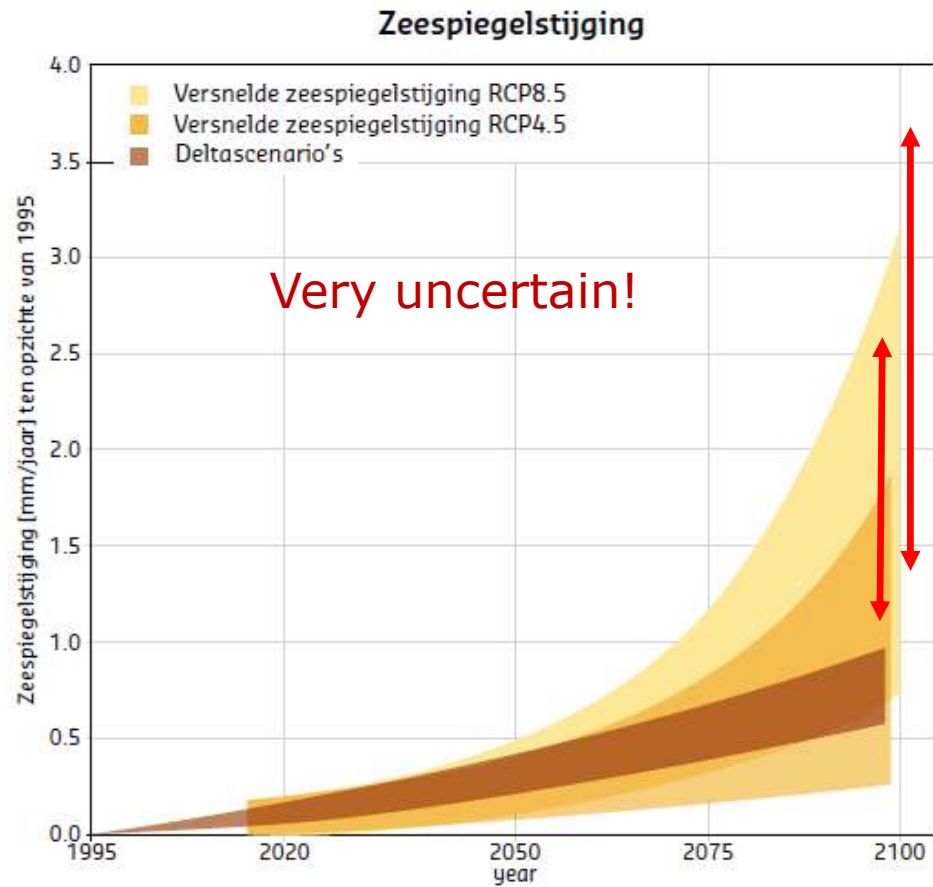
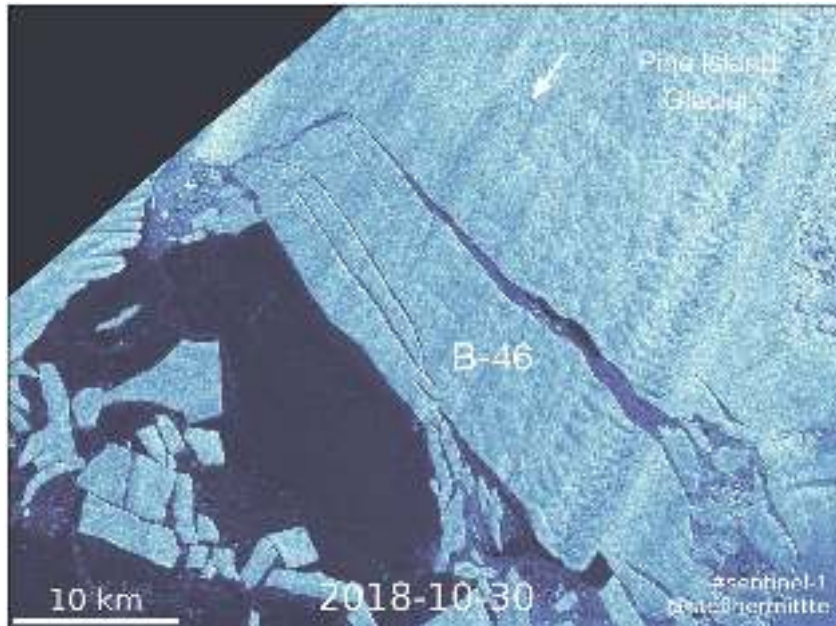


Not corrected
for long term
tidal oscillations
and Storminess

Corrected for
long term tidal
oscillations and
Storminess

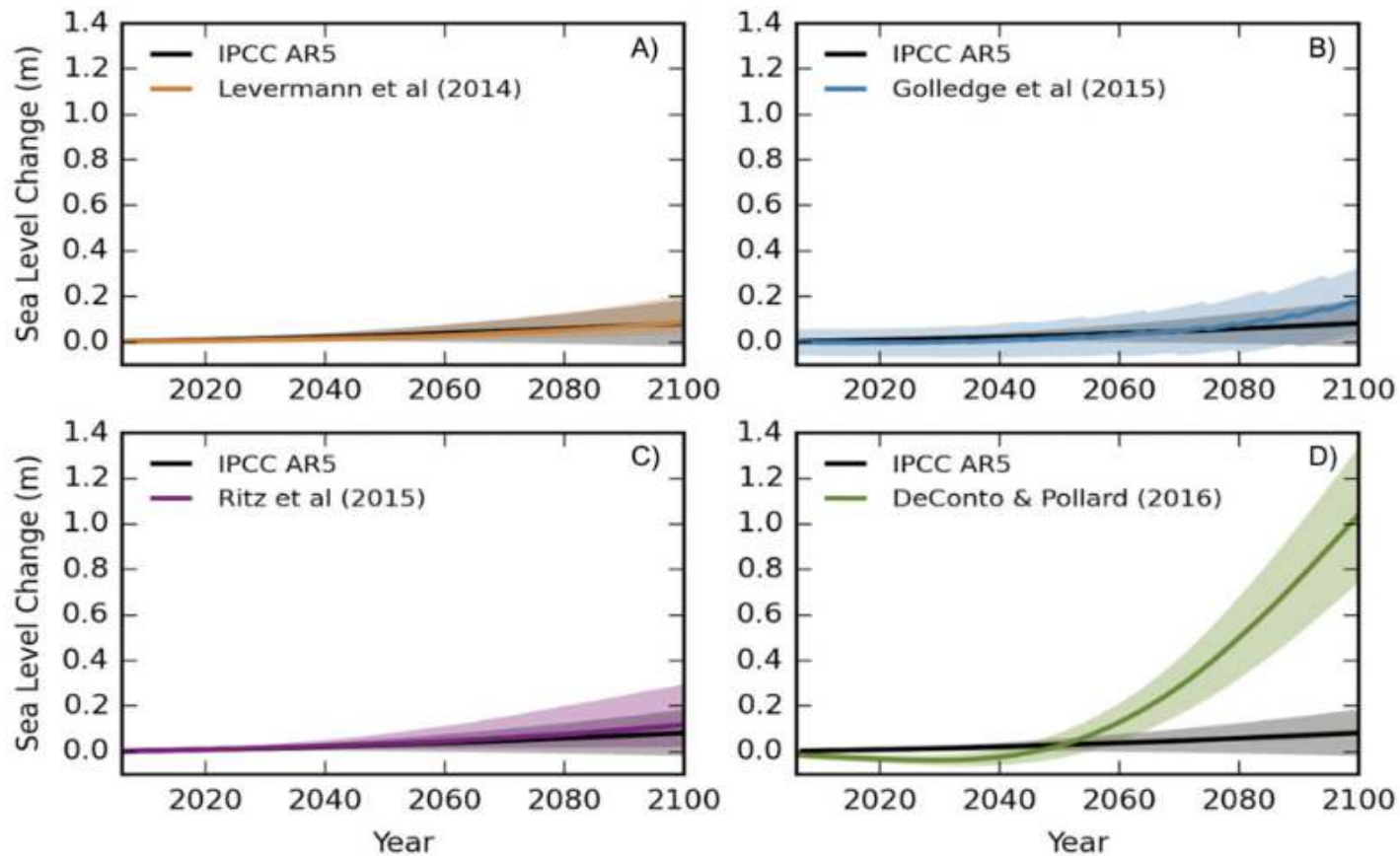


Near future? Large uncertainty



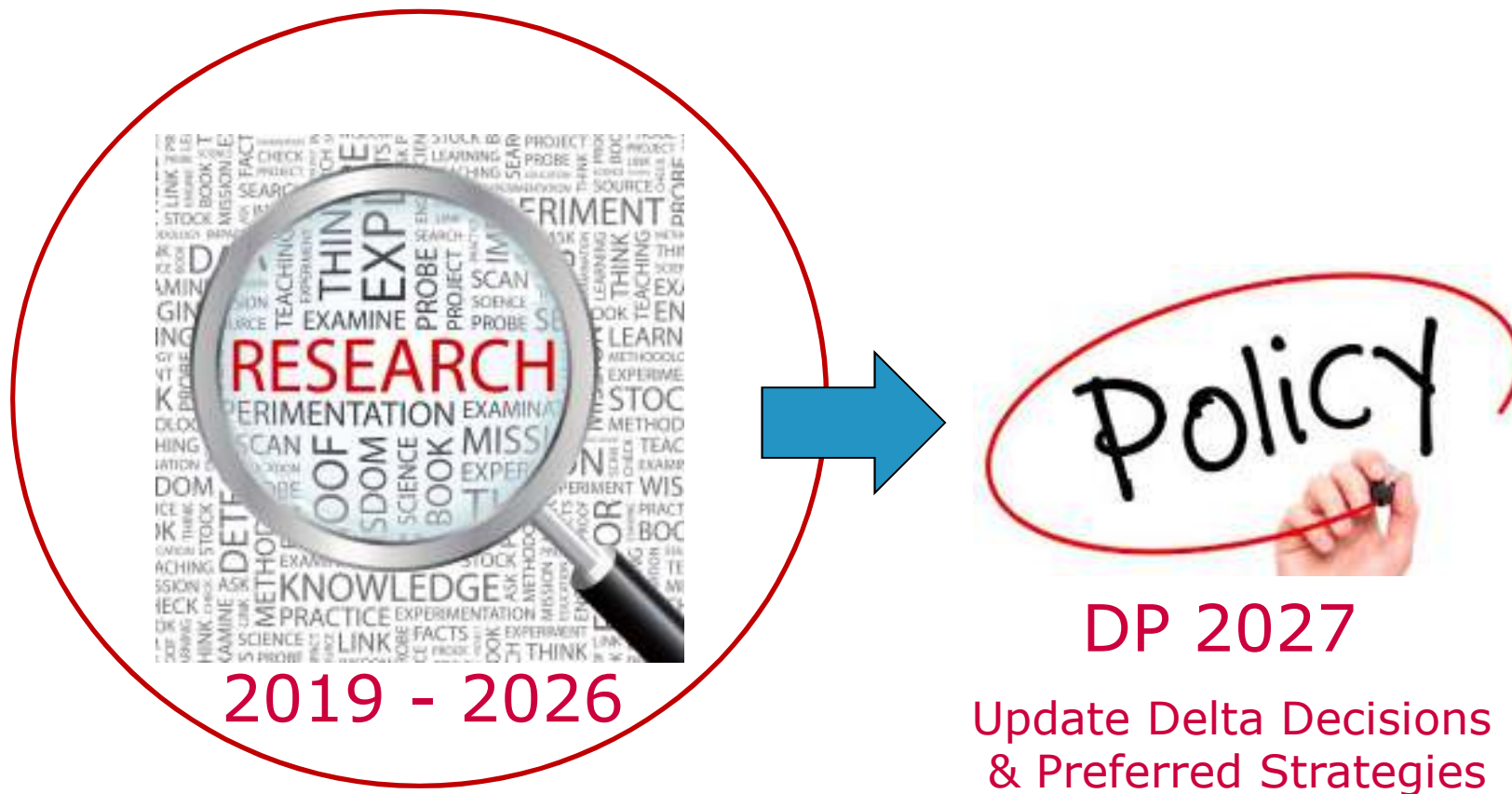


Different studies on Antarctic contribution



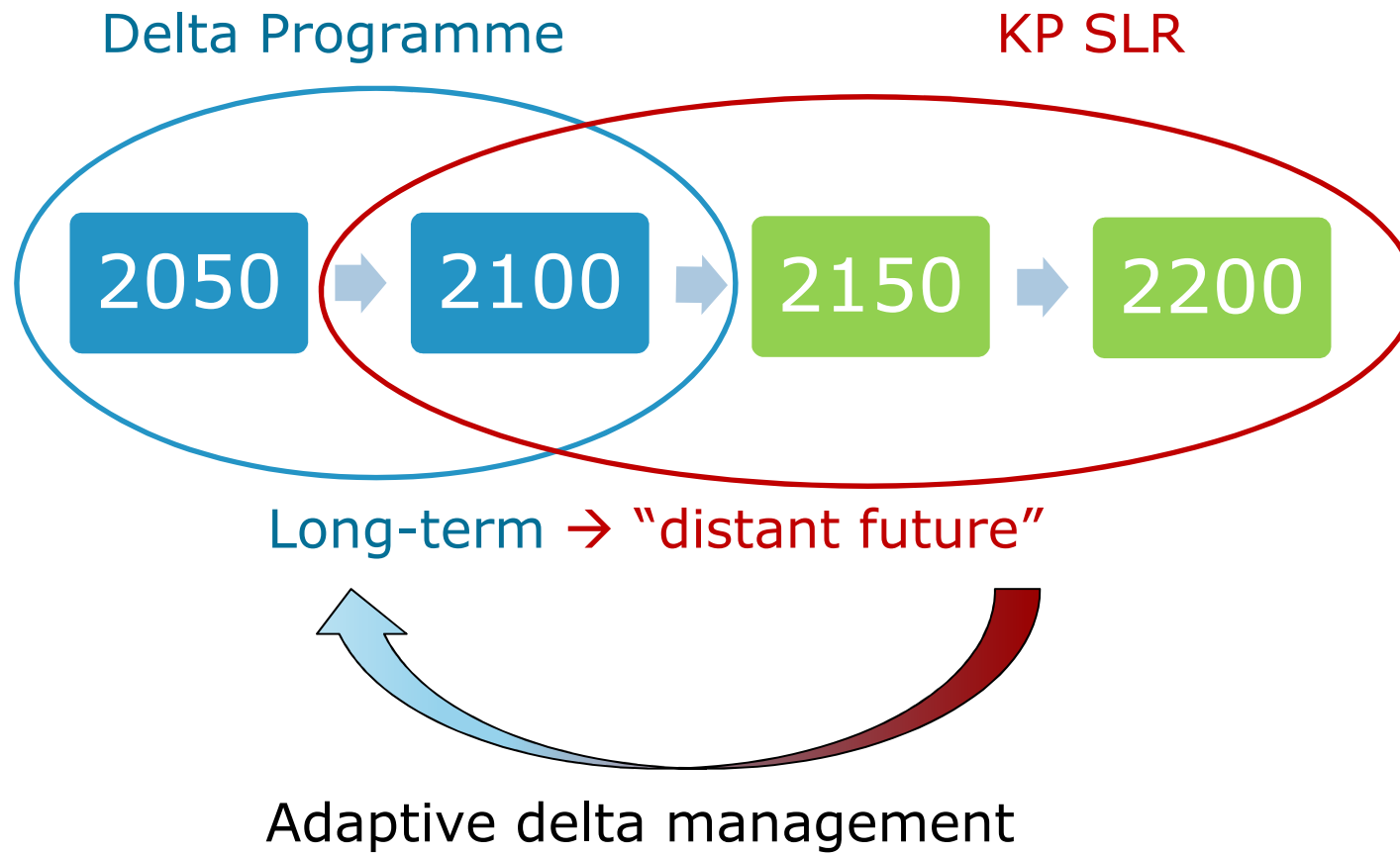


Focus on research: Knowledge Programme SLR



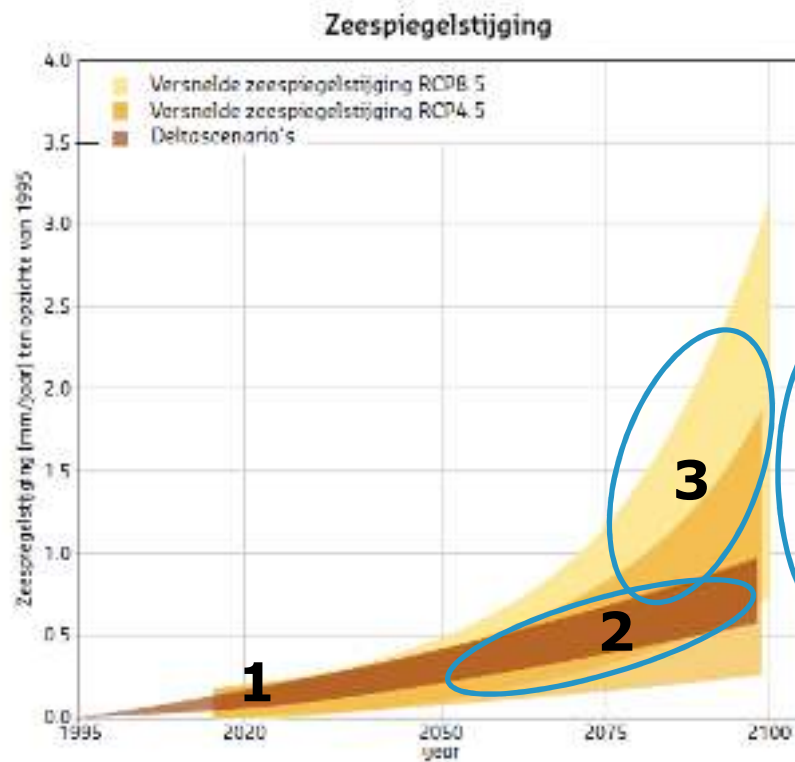


Horizon





Key questions

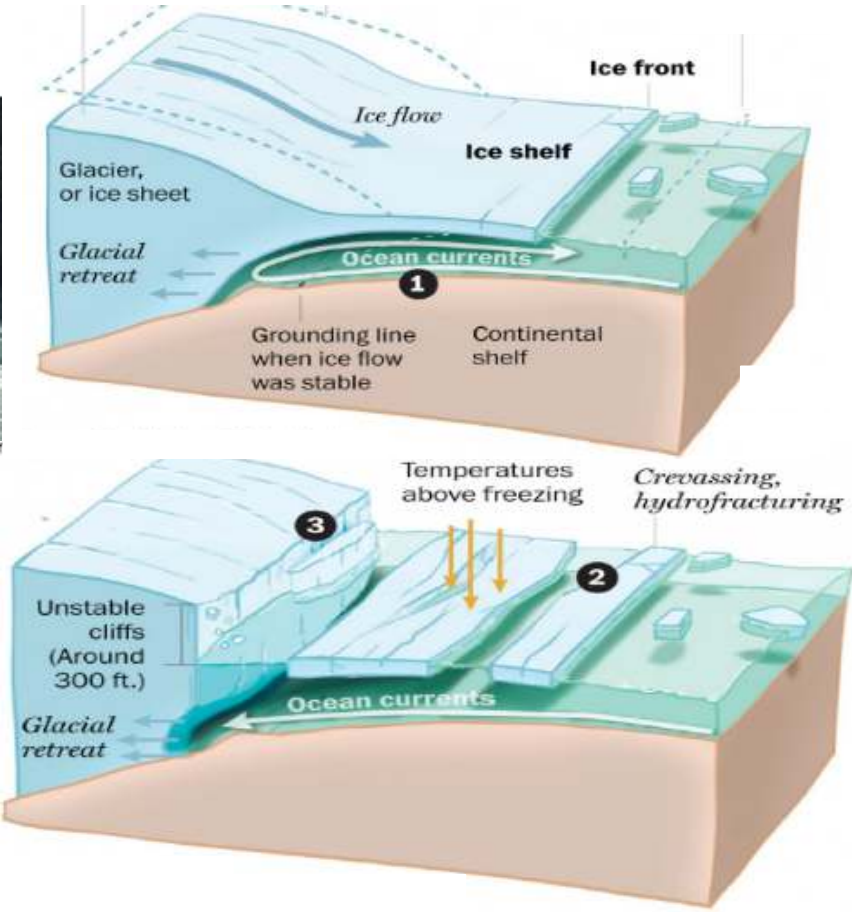


1. Investments with long horizon (100 years)
2. Strategic choices within 'preferred strategies' (2050-2100)
3. "Low probability, high impact" scenario's
4. Distant future (> 2100)



Track I Research SLR & Antarctica

What can we expect?



International co-operation



Track II Systems Analysis

What is the impact?
natural systems
coast & rivers

flood defences, pumping
stations, fresh water supply



Adaptation tipping points?

To what point/moment is our current strategy sustainable?
How can it be extended?



Track III Signalling methods

When to intervene?



Delta Programme Signal Group



Track IV Alternatives for the far future

Action perspective? How to anticipate?

A - Protect (closed)



B - Protect (open)



C - Attack



D - Accommodate



plans & initiatives → alternative strategies → adaptation paths



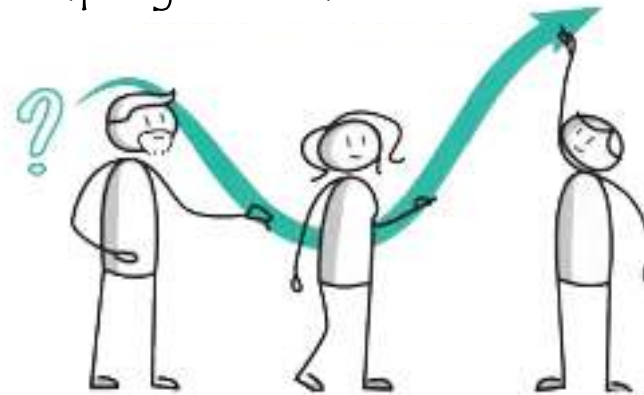
Track V Implementation strategy

How to manage it?



governance

Shaping the transition



transition management

e.g. spatial planning,
keeping options open



communication



Joined communication message (under construction)

- The Netherlands is one of the most save deltas; at least untill 2050
- We are prepared for a sealevel rise of 1m in 2100
- Adaptive Delta Program periodically reviews indicators and scenario's
- Policy (scientific consensus): IPCC (2019) and KNMI (2021) is leading → Deltascenario's
- We seriously consider signals of more extreme sealevel rise
- There is enough time to prepare ourselves
- Knowledge program SLR: IenW, DC, partners DP and knowledge institutes
 - Make uncertainties smaller, enlarge knowledge of potential impacts and measures, and explore action perspective for the far future
 - Substantiated and well-considered choices at next review.



Thank you!